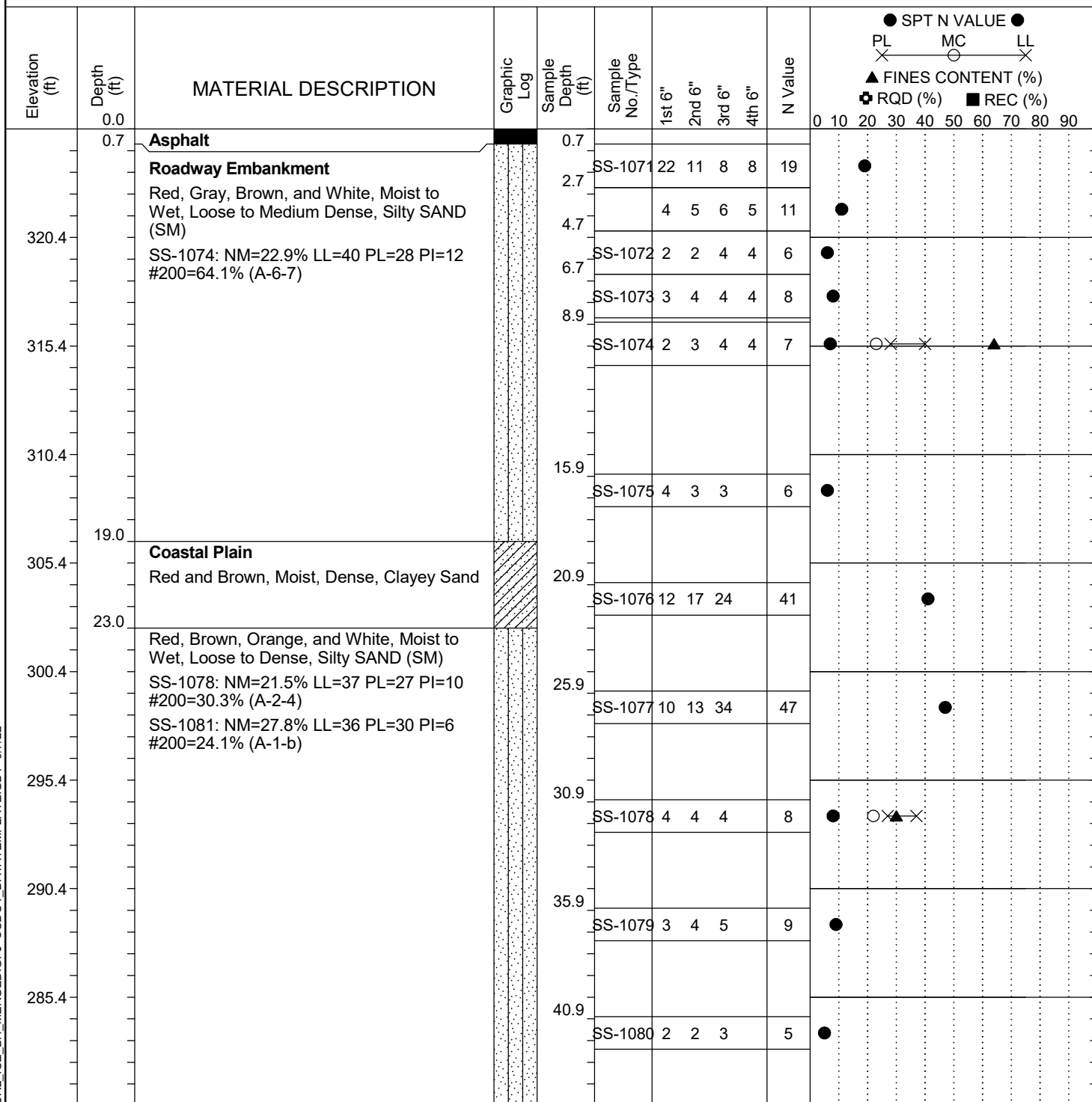


Project ID:	P039719	County:	Richland	Boring No.:	G-119
Site Description:	Carolina Crossroads Phase 2			Route:	Broad River Rd.
Eng./Geo.:	M. Akland	Boring Location:	612+50	Offset:	38 RT
Elev.:	325.4 ft	Latitude:	34.03972499	Longitude:	-81.09422486
Total Depth:	72.4 ft	Soil Depth:	72.4 ft	Date Started:	3/22/2022
Core Depth:	N/A ft	Date Completed:	3/22/2022		
Bore Hole Diameter (in):	2.25	Sampler Configuration		Liner Required:	Y (N)
Drill Machine:	D-50 #439	Drill Method:	RW	Energy Ratio:	90.8%
Core Size:	N/A	Driller:	P. Mattis	Groundwater:	TOB 16.8 ft
				24HR	FIAD


LEGEND
Continued Next Page

SAMPLER TYPE		DRILLING METHOD	
SS - Split Spoon	NQ - Rock Core, 1-7/8"	HSA - Hollow Stem Auger	RW - Rotary Wash
UD - Undisturbed Sample	CU - Cuttings	CFA - Continuous Flight Augers	RC - Rock Core
AWG - Rock Core, 1-1/8"	CT - Continuous Tube	DC - Driving Casing	